



COMPANY PROFILE

2026

Our commitment to quality, integrity and Customer satisfaction is evident in every aspect of our operations.

MORE INFO

www.twgroup.co.za

CALL US

017 638 0579

EMAIL

info@twgroup.co.za





HISTORY

From humble beginnings, brothers Billy and Dewald Te Water founded TW Stene in 2006, marking the start of the TW Group's journey toward building sustainable infrastructure across Mpumalanga. Their success is rooted in a strong commitment to quality, teamwork and growth.

Growing up on a farm, Billy was set to inherit the family business, leaving Dewald to carve out his own path. Eventually, the brothers decided to join forces, splitting responsibilities: Dewald continued farming, while Billy expanded into construction. Their first major steps included purchasing a TLB and a tipper truck, which allowed them to take on contract work and tap into the emerging coal industry in Mpumalanga. The purchase of a brick factory in 2006 led to the establishment of TW Stene, the cornerstone of what would become a diversified enterprise.

Together, they grew the company into a multifaceted business offering services in civil construction, earthworks, transportation, plant hire, demolition, residential and industrial development, construction surveying, stockpile and dam maintenance (including Sasol Ash and FAD dams), and steel fabrication. Alongside their construction ventures, Dewald maintained a thriving farming career with Te Water Boerdery, recently highlighted in Farmer's Weekly magazine.

Starting with just 200 hectares of maize and a small sheep herd, Dewald and Billy steadily expanded, reinvesting earnings to rent more land. By 2002, they had 800 hectares under cultivation. Their determination turned every opportunity into a reality, laying the foundation for the TW Group's broad scope today, which spans cattle, soybeans, silage, brick manufacturing, agriculture and construction.

Following Billy's passing on January 29, 2023, Dewald has carried on as the driving force behind TW Group, ensuring the company's legacy of resilience and growth continues.



Billy Te Water



Dewald Te Water

A close-up photograph of a large, treaded tire on a yellow excavator, set against a background of a construction site with dust and other machinery.

ABOUT US

TW GROUP began trading as TW Transport in 1995 and has since established itself as a leading Contractor in the Petrochemical, Mining and Construction Sectors.

The Group has since expanded it's horizons and has been providing specialist service in various fields such as:

- Civil Construction
- Earthworks and Earthmoving
- Transport
- Demolishing
- Plant Hire
- Residential and Industrial Developments
- Construction Survey
- Stockpile and Dam Maintenance - Sasol Ash and FAD Dams
- Steel Fabrication

Our Group also provides services to the general Public with our own Paving and Brick Factories which also includes Sand and Aggregate sales.

The Company's sophisticated Personnel and Equipment Infrastructure provides Client service second to none. With internal workshop facilities and specialized plant and equipment, TW Group has the resources to deliver on our Clients requirements.

TW Groups ability to offer complete packages for all works has set the benchmark for the Industry offering a smooth transition from Demolition through to Earthworks and Civils projects.



VISION & MISSION

- Our vision is to continually invest in ways that will enhance how we operate and the services we provide.
- Over a number of years, the Company has expanded, opening new divisions to meet our Client's needs. Our ability to offer complete packages for all works has set the benchmark for the industry. We are leaders in pioneering innovative Engineering solutions and constantly strive to offer the best service available.
- We will continue to embrace new technologies, many of which are reflected in our progressive Demolishing initiatives and work practices that help protect the fragile environment.
- We don't let our Client's down we deliver on time, to budget and we guarantee our work. Our resources are second to none and experience unrivalled in the field.





SERVICES

CIVIL CONSTRUCTION

- Reduce building issues by using a full service Construction Contractor.
- TW Group's unique Civil division offers a complete service for all Construction requirements, from Earthworks, Bulk Fills, Construction of Substations, Change Houses, Offices, Residential and Industrial Developments, Roads, Dams, Shaft Collars, Fan Foundations, Bentonite Slurry Trenches etc.
- The TW Civil team allocated to each project remains consistent, resulting in clearer communication between Company and Client to ensure the timely delivery of services.
- TW Project teams are equipped with support across the board with High level Quality Control backup, Onboard Engineers and Designers which can ensure that the smallest project to the Largest Residential Development can be carried by our team from design stage until the moment we turn on the lights in your new Home, Office or Workshop.
- Our combined Demolition & Civil Packages place both Demolition and Civil team's onsite to coordinate both projects concurrently. With complete site control and safety procedures in place, works are conducted more efficiently and effectively through simultaneous delivery of civil and demolition projects.
- TW Group also owns a Concrete Readymix Batch plant onsite, this way we can ensure delivery on time and projects being completed within the set time constraints.



DEMOLITION



- Access to the best machinery and one of the largest demolition workforces in the region.
- TW's Demolition division specializes in large, difficult and delicate projects. Offering complete site control and safety procedures, our capabilities include Commercial and Industrial Demolition and complete Demolition and Civil works packages. With a solid reputation for delivering on time and on budget.
- As part of the demolishing package, TW's Demolition division has vast experience in the rehabilitation of mines as per the DMR regulations, which includes but is not limited to:
 - Shaft Sealing (Plugs) Main, Ventilation and Incline Shafts.
 - Structural and Mechanical Demolition Workshops, Conveyors, Drive Houses, Bunkers etc.
 - Commercial and Industrial Demolition Sub-Stations, Offices and Change Houses to name a few.
 - Other Oil sumps and Bunds, Concrete Bases, Headgear Demolition etc.
- TW Group is currently in the process of becoming a Licensed Asbestos remover.



07

TRANSPORT

Our fleet of superior plant and trucks, with well managed and trained drivers and operators within TW's Transport division ensure quick, safe and cost effective service and deliveries.

GSM monitored, our drivers pride themselves on delivering the most efficient service to the TW team's onsite. The teams in the field and our Clients are also supported with a direct to site delivery service of equipment and machinery, by TW Group's Trucks, Low beds, Flatbeds, Crane Trucks and LDV's.

Our transport division is also responsible for the delivery of heavy machinery across South Africa, effectively Growing the brand and service boundaries.





PLANT HIRE

TW Group's Plant Hire division is rapidly becoming one of the premier heavy equipment hire companies in Mpumalanga with more than 300+ vehicles/equipment.

TW specializes in equipment from a small to the larger end of the Construction Equipment spectrum. With extensive knowledge and working experience with heavy machinery, the division offers a niche fleet of the latest technology Excavators, Loaders, Dozers, Rollers, Graders, Tippers and Dump trucks for hire.

TW now also supplies Plant with GPS Level Control Systems, designated Dozers are fitted with State of the Art Level controls systems which finish off rehab or Constructed areas to pin point levels as per loaded design software.





SAFETY

We acknowledge that no other Business practice is more important than the safety of our Employees. TW Group is committed to achieve and maintain an exceptional Health and Safety record in the industry.

The Company has dedicated Occupational, Health & Safety Officers assigned to ensuring all works are undertaken according to industry codes of practice and statutory guidelines.

TW Group respect, and actively encourage the right of Employees to report any health or safety concerns.





WORKSHOP



TW Group's on-site facilities include a state-of-the-art workshop equipped with 9 fully operational service vehicles, ready to handle plant equipment repairs both onsite and in the field. In addition to this, we maintain TW Group's over 300+ plant machinery and equipment, ensuring they are well-prepared to meet any operational needs.

Their highly skilled service crew is dedicated to providing comprehensive field service and machinery equipment refurbishing and repairing. With the expertise of the TW Group Workshop, we ensure our machinery operates at peak performance, keeping your contracts running smoothly and efficiently.





TW CIVILS AND EARTHMOVING PROPERTY DEVELOPMENT

WATER & WASTE WORKS, CIVIL & STRUCTURAL ENGINEERING

We TW Civils and Construction, are your trusted partner for comprehensive engineering and construction solutions, we provide the full range of groundworks and civil engineering services including foundation construction, roads, drainage/service and external paving. Offering a full range of services from water and wastewater infrastructure to civil and structural engineering. Our expertise extends across the entire project lifecycle, taking any initiative from a bare piece of ground to a fully completed building or complex.

With a diverse knowledge base built over decades, our talented and versatile team delivers engineering services that turn concepts into reality. We provide end-to-end solutions, ensuring projects are designed, managed and constructed to the highest standards, no matter the size or complexity.

Our portfolio spans a variety of sectors, showcasing our ability to adapt and innovate across different industries. Whether it's designing intricate water management systems, developing robust civil infrastructure, or constructing large-scale facilities, we bring a client-focused approach that emphasizes quality, safety and sustainability.

Choose TW Civils and Construction for a seamless and efficient path from vision to execution, where your goals are met with precision and expertise.

Services:

- Earth Works Support
- Foundations
- Piling
- Drainage Infrastructure
- External Works
- Road Infrastructure
- Road Tarring
- Paving





STEEL CONSTRUCTION

RESIDENTIAL & COMMERCIAL PROPERTIES DEVELOPMENTS





GRAVEL AIRSTRIP CONSTRUCTION

AIRSTRIP UPGRADES, MAINTENANCE, NEW BUILDS & REBUILDS – START TO FINISH.

TW Civils is a leading specialist in the construction, maintenance, and rehabilitation of gravel airstrips for fixed-wing aircraft. With proven expertise in remote, off-grid areas like Tulela Reserve Lodge, we provide vital air access through expertly built bush runways. From conservation lodges and remote tourist destinations to community access zones and private wilderness retreats, TW Civils clears dense vegetation, levels challenging terrain, and seamlessly integrates safe, durable airstrips into the natural landscape.

What We Do

TW Civils delivers complete airstrip solutions—from planning and land clearing to grading and surfacing. Whether starting from scratch or upgrading existing strips, we ensure safe, reliable operations in remote and demanding environments.

Our core services include:

- New Airstrip Construction

Full design and build of gravel runways, including clearing, compaction, and drainage.

- Upgrades & Extensions

Enhance surface quality, extend length, or improve structure to meet aviation needs.

- Rebuilds & Rehabilitation

Restore worn or unsafe airstrips using modern materials and methods.

- Ongoing Maintenance

Keep airstrips in peak condition with routine grading, vegetation clearing, and surface care.

Gravel Airstrips





WATER RETAINING DAM WALL CONSTRUCTION

ENGINEERED BY TW CIVILS — BUILT FOR NATURE, DESIGNED FOR LIFE

At TW Civils, we specialize in the construction of eco-conscious, durable dam walls designed not only to retain water but to support natural ecosystems. Our latest project exemplifies this philosophy: a purpose-built dam constructed to house hippos, offering them both water for living and a secure island for resting.

What We Do

- **Dam Wall Construction with Purpose**

TW Civils constructs high-integrity reinforced concrete dam walls, tailored to bushveld and rural environments. These walls withstand seasonal changes and ensure reliable water retention for conservation, wildlife, or agricultural use.

- **Custom-Designed Dam Habitat for Hippos**

For this project, the dam was specifically designed to support hippo life. The water body provides a calm, secure space for hippos to stay submerged during the day – essential for their well-being and cooling needs.

- **Island Engineering for Rest & Safety**

A key feature is the man-made island situated at the center of the dam. This island was intentionally created as a safe, elevated resting area for hippos to sleep and sunbathe – a critical requirement for their natural behavior and safety from land predators.

- **Turning the Dam Wall into a Functional Road**

Our dam walls are multi-functional – designed not only to hold back water but also to act as stable, drivable roads. Using eco-block paving and structural reinforcement, the surface handles foot and light vehicle traffic while maintaining structural integrity.

- **Environmental Rehabilitation & Blending with Nature**

Once construction is completed, we take extra care to rehabilitate and reintegrate the site:

- Slopes are shaped and replanted with indigenous grasses,
- The wall is visually softened with natural earth and vegetation,
- Surrounding areas are left undisturbed to promote natural regrowth and harmony.



WATER RETAINING DAM WALL CONSTRUCTION

This innovative project by TW Civils combined engineering precision with ecological vision. Designed specifically to support a small hippo population, the dam features a reinforced wall that doubles as a road and a custom-built island where the animals can safely rest. From barren soil to a thriving wetland, the site was transformed into a natural-looking habitat, complete with indigenous vegetation and carefully restored surroundings. It's a showcase of how infrastructure can serve both purpose and the planet.

A PROJECT IN STAGES

Before: Foundations being laid with steel reinforcement and concrete casting, forming the future dam wall.



After: A thriving, rain-fed dam with a visible central island, integrated wall-road, and surrounding greenbelt – perfectly aligned with the goal of a hippo-friendly habitat.





WATER RETAINING DAM WALL CONSTRUCTION





WATER WAY DRIFT

CONSTRUCTION & ROAD MAINTENANCE

TW Civils is a dedicated civil engineering company specializing in the construction and maintenance of Water Way Drifts—an essential infrastructure solution for managing water runoff on rural and urban roads. With a strong focus on durability, environmental compatibility, and erosion control, TW Civils ensures the safe and sustainable management of water along roadways.

What We Do

Water Way Drifts Construction

TW Civils builds engineered waterway drifts that direct rainwater and stormwater off the road surface, preventing erosion and structural damage. These drifts are essential for:

- Channeling water along sloped roads
- Reducing pooling and washouts
- Prolonging road durability
- Supporting rural and off-grid access routes

Erosion Control Systems

To reinforce and protect road infrastructure, TW Civils installs:

- Armourflex Concrete Mats – Interlocking blocks that stabilize soil and manage runoff.
- Gabion Baskets – Rock-filled wire cages for slope stabilization and water flow control.

These systems are integrated for maximum durability and eco-friendly performance.

Road Maintenance Services

TW Civils also delivers key road maintenance services:

- Storm-damage repair
- Shoulder and surface grading
- Culvert clearing and upkeep

Each project is approached with expert planning to ensure roads stay safe, reliable, and long-lasting.

WATER WAY DRIFT CONSTRUCTION & ROAD MAINTENANCE

Projects in Focus

TW Civils has delivered successful installations of water way drifts across various bushveld terrains, where seasonal rainfall and runoff present significant roadway challenges. Their use of gabion terraces and concrete drift beds has demonstrated long-term effectiveness in both protecting roads and maintaining natural water paths.





GRAVEL ROADS

CONSTRUCTION & MAINTENANCE

TW Civils is a trusted name in gravel road construction, specializing in the upgrade, maintenance, and rebuilding of gravel roads in rugged and remote environments. With a strong presence in bushveld and rural regions, TW Civils delivers durable, low-maintenance road solutions that meet both functional and environmental demands.

What We Do

Gravel Road Construction

TW Civils builds gravel roads from the ground up—cleared, compacted, and engineered for long-term performance in rugged terrain.

- Bushveld & nature reserve roads
- Farm and lodge access routes
- Custom grading & drainage design

Road Upgrades & Surface Improvements

We restore and improve existing gravel roads that have become uneven or eroded over time.

- Road widening & reshaping
- Re-graveling & surface levelling
- Improved drainage & side shaping

Weather Damage Repair & Rebuilding

Severe rain can wash away roadbeds and make routes impassable. TW Civils rebuilds and reinforces damaged roads to be stronger and more water-resistant.

- Washout restoration
- Water diversion planning
- Erosion control reinforcements

Nature Reserve Road Maintenance

Working in sensitive environments, we maintain reserve roads with care, ensuring safe access without disrupting natural habitats.

- Eco-sensitive road repair
- Natural terrain blending
- Quiet equipment for wildlife zones

GRAVEL ROADS CONSTRUCTION & MAINTENANCE

Project Footprint

From game reserves to rural communities, TW Civils has restored and constructed kilometers of gravel roadways that withstand the seasons and serve communities year-round.





SILO

CONSTRUCTION AND CIVIL ENGINEERING

TW Civils is a leading construction company providing complete solutions for the agricultural and industrial sectors, with a strong focus on designing and building silos from the ground up. Our reputation is built on skilled workmanship, years of experience, and a commitment to quality.

From groundwork to final structure, we manage every phase with precision and expertise – delivering robust, scalable solutions tailored to our clients' needs.

Our Core Services

Silo Construction

We specialize in building custom silos designed for durability, safety, and performance – whether for grain, cement, or industrial materials. Our team manages the full construction process, including:

- Site preparation
- Foundation casting
- Steel erection
- Finishing and sealing

Steelwork

Our steelwork team fabricates and installs essential structures for civil and industrial use, including:

- Framework for silos and tanks
- Platforms, ladders, and access points
- Custom steel reinforcements

Civil Engineering

Our civil services form the foundation of our turnkey delivery. We offer:

- Earthworks and excavation
- Concrete casting and shuttering
- Foundations and slabs
- Stormwater and drainage

Casting & Concrete

Concrete work is central to our builds. We provide:

- Precision-cast structural bases
- Reinforced walls, plinths, and slabs
- On-site batching and curing control

SILO CONSTRUCTION AND CIVIL ENGINEERING

Explore Our Work

Take a closer look at some of our recent projects – from silo construction and steelwork to full civil engineering solutions. Each image showcases the quality, precision, and attention to detail that define TW Civils.





SLIME AND ASH DAM MAINTENANCE



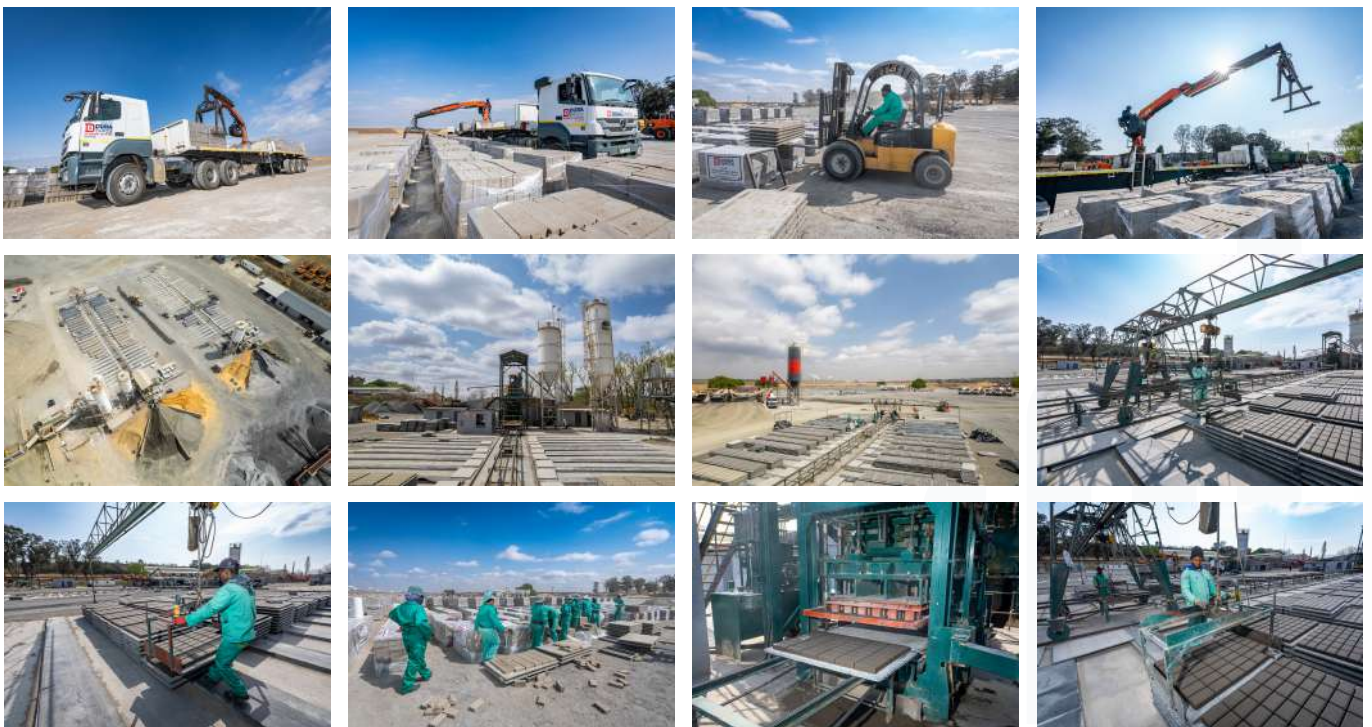
CONCRETE BRICK MANUFACTURERS

We specialize in manufacturing and supplying the highest quality pavers and building bricks to meet the diverse needs of our clients. Each brick and paver we produce undergoes rigorous quality control to ensure it meets and exceeds industry standards, providing you with reliable and durable building materials for any project.

Our product range includes:

- Maxi Bricks
- Hollow Blocks
- Stock Bricks
- Paving Bricks

We pride ourselves on offering competitive pricing and prompt delivery services to ensure your projects stay on track and within budget. With a commitment to quality and customer satisfaction.



READYMIX CONCRETE SUPPLIERS

Concrete 360 Readymix is Secunda's leading independent manufacturer and supplier of quality readymix concrete to various sub-sectors of the construction industry. We take pride in our technical expertise and unwavering hands-on commitment as it enables us to manufacture and supply the highest quality ready-mix concrete according to each individual client's requirement. Our readymix plant is based in Trichardt, Mpumalanga. Ready,Set,Pour... We supply readymix concrete primarily to large-scale civil engineering and infrastructure projects through fixed and mobile readymix concrete plants where concrete is batched on demand and then transported to site by concrete mixer trucks.



PROPERTY DEVELOPERS & LETTING

TW Group Property Rentals is a leading property development and management company specializing in a wide range of commercial, residential and industrial real estate solutions. With a strong presence in Secunda and surrounding areas, we offer a diverse portfolio of office rentals, warehouse rentals and commercial property lettings tailored to meet the dynamic needs of businesses across various sectors.

Our Services

- **Office Rentals:** Our flexible office spaces are designed to accommodate businesses of all sizes, providing modern facilities and strategic locations to enhance productivity and convenience.
- **Warehouse Rentals:** We provide top-quality warehouse solutions with features such as high roller shutter doors, 3-phase electrical supply and spacious layouts ideal for storage, manufacturing, or distribution needs.
- **Commercial Property Rentals:** We offer a variety of commercial properties for lease, suitable for retail, industrial and corporate use. Our properties are strategically located to maximize accessibility and visibility for your business.





MAIZE PRODUCTS PRODUCER

Afriking Foods is a leading producer of high-quality maize products, dedicated to providing nutritious and affordable food solutions for families across the region. Our expertise lies in the manufacturing and distribution of a variety of maize-based products that cater to diverse dietary preferences and tastes.

With a commitment to quality and innovation, we have developed a range of products that bring the natural goodness of maize to your table, including:

- **NutriKing Instant Porridge:** A delicious and convenient instant porridge packed with essential vitamins and minerals, perfect for a wholesome breakfast or a nutritious snack.
- **KingPuffs:** Light, crispy and flavorful maize puffs that make an ideal snack for all ages, whether at home, school, or on the go.
- **Skhoppas Mielie Pops:** Or also known as Ama Kipkip. A classic favorite among maize lovers, our Skhoppas Mielie Pops are tasty and versatile, ideal for any time of the day.

At Afriking Foods, we pride ourselves on our commitment to excellence, from sourcing the finest maize to utilizing state-of-the-art manufacturing processes. Our goal is to nourish communities with products that not only taste great but also promote a healthy lifestyle.

Whether you are enjoying a hearty bowl of NutriKing Instant Porridge, snacking on KingPuffs, or savoring Skhoppas Mielie Pops, you can trust Afriking Foods to deliver quality and value in every bite.

Experience the King of Maize Products – Afriking Foods, where taste meets nutrition!



FEED STORAGE AND TRANSPORT

EXACT Silage[®] revolutionizes animal nutrition by solving the issue of silage shelf life. Traditionally, silage had to be consumed within 5 days, posing challenges for farms with smaller daily needs.

EXACT Silage[®] provides a fresh, long-lasting solution in bales of 400-900 kg, allowing farmers to open as needed for consistently high-quality silage. Its packaging also supports long-distance transport. Wrapped in a high oxygen barrier film, the bales can be stored outdoors year-round.

Different crop options deliver unique benefits:

- **Maize:** High energy for milk production and growth.
- **Whole-Crop Oats:** Fiber-rich, supporting rumen health.
- **Grass:** Balanced fiber and protein for performance.
- **Sweet Forage Sorghum:** Natural sweetness for high feed intake.
- **Lucerne:** Protein-rich for dairy and young livestock growth.
- **Soybean:** High protein for muscle development.





TW GROUP OF COMPANIES





OUR CLIENTS

COMPLETED PROJECTS

Description	Area	Company	Contract Date
Reinstate Process Water Dams 8 & 9	Unit 52 - Dams 8 & 9	Stefstocks For Sasol Synfuels	2012
Reinstate Process Water Dams 6 & 7	Unit 52 - Dam 6 & 7	Stefstocks For Sasol Synfuels	2012
Construction of Balancing Lines Between Dam 8 & 9	Unit 52 - Dams 8 & 9	Stefstocks For Sasol Synfuels	2012
Dam 6 & 7 Outside Wall Repairs	Unit 52 - Dam 6 & 7	Stefstocks For Sasol Synfuels	2012
Substation At Riversdale	Riversdale	Sasol Mining	2013
Construct Drive House Plinths at Riversdale	Riversdale	Sasol Mining	2013
Construct Shaft Collars at Riversdale	Riversdale	Sasol Mining	2013
Closure of Spandow Ventilation Shafts	Syferfontein	Sasol Mining	2013
Emergency Repairs at FAD 4	Outside Ash	Sasol Synfuels	2013
Construction of Access Road To FAD 4	Outside Ash	Sasol Synfuels	2013
Construction of Division Wall at FAD 4	Outside Ash	Sasol Synfuels	2013
Closure of Twisdraai North East Ventilation Shafts	Twisdraai	Sasol Mining	2013
FAD 4 - Building Skid Units At Outside Ash CAE Dams	Outside Ash	Sasol Synfuels	2014
Crack Repairs on FAD 4	Outside Ash	Sasol Synfuels	2014
Remedial Work at Process Water Dam 6	Unit 52 - Dam 6	Sasol Synfuels	2014
Term Contract - Earth Moving Equipment	Sasol Area	Sasol Synfuels - Various	2014
Services of Earth Moving Activities to The Outside Ash Plant	Outside Ash	Sasol Synfuels	2014
Civil Works For Water Treatment Plant At Outside Ash	Outside Ash	Proxa	2014
Tweedraai Substation Switch house	Tweedraai	Sasol Proxa	2014
Tweedraai Fan Foundations	Tweedraai	Sasol Mining	2014
Tweedraai Incline Substation	Tweedraai	Sasol Mining	2014
Civil Works For Trash And Feedbox Pipe Supports	Evander Metallurgical Plant	Basil Read Matomo	2014
Anchor Blocks FOR HDPE Pipeline	Evander Metallurgical Plant Perimeter	Sinvac Mining & Engineering	2014
Tank Farm West Road 5 - Construction of New Road CE44	Tank Farm West	Cycad Pipelines	2014
Closure of Twisdraai West service/ventilation and incline shafts	Twisdraai West	Sasol Mining	2014



COMPLETED PROJECTS

Description	Area	Company	Contract Date
Closure of Twisdraai Central service/ventilation and incline shafts	Twisdraai Central	Sasol Mining	2014
Renewal Work To the Process Water Dams At Unit 52	Unit 52	Stefstocks (Sasol Synfuels)	2014
New Pilot Plant At Secunda	CAE Dams - Outside Ash	Proxa	2015
Rehabilitation of Bosjesspruit Workshop Area	Bosjesspruit	Sasol Mining	2015
MTV Civils	Sasol Outside Ash	Proconics	2017
Reinstate Stormwater Trenches Dam 8,9 & 10A	Sasol Unit 52	Sasol Synfuels	2017
Impumelelo Vent Fan Foundations	Impumelelo Mine	Sasol Mining	2017
Dam 8 Crest Repairs	Sasol unit 52	Sasol Synfuels	2017
Construct MTV Landfill	Sasol Outside Ash	Group Technology	2017
Reinstate Cut Off Trenches	Sasol Outside Ash	Group Technology	2017
Construct Thubelisha Substation	Thubelisha Mine	Sasol Mining	2017
North Jeffrey Mechanical	Sasol Outside Ash	Proconics	2017
Construct and Run Ashcrete Batch Plant	Sasol FAD6	Group Technology	2017
Civil Works at NDWT Project	Sasol Nitro	Proxa	2017
NDWT Civils Demo & Turning Circle	Sasol Nitro	Group Technology	2017
NDWT Thermal Plant Civils	Sasol Nitro	Proxa	2017
Weltevreden Pit 7 Access Road Upgrade	Syferfontein Mine	Sasol Mining	2018
Charlie 1 Landfill	Sasol Landfill	Group Technology	2018
Rehabilitation of Twisdraai East	Twisdraai East Mine	Sasol Mining	2018
Construct Three Substations	Evander Mines	DRA Consulting	2018
Paving And Civils For Evander Mines	Elikhulu Mines	Evander Mines	2018
C1 MEIP Civils	Sasol Landfill	Proconics	2019
Shaft Collars	Klipspruit	Sasol Mining	2019
API Dam Cleaning	Sasol API Dams	Sasol Synfuels	2019
API Stabilization	Sasol Outside Ash	Sasol Synfuels	2019

COMPLETED PROJECTS

MTV Civils	Sasol Outside Ash	Sasol Synfuels	2019
Exploratory Digging	Sasol Outside Ash	Group Technology	2019
Silkaatskop Residential and Commercial Development - Infrastructure	Secunda	Orangeville Properties	2020
Sasol Outside Ash – Dam and Stockpile Maintenance Project – 5 Years	Sasol Outside Ash	Sasol South Africa	2020
Silkaatskop Residential and Commercial Development	Secunda	Heroica Properties	2021
Cut Off Trenches – Weir Construction	Sasol South Africa	Projects and Engineering	2022
Irenedale – Incline Collar Construction	Sasol Irenedale - Bosmanskrans	Sasol Mining	2022
Irenedale – Fan Foundation Construction	Sasol Irenedale - Bosmanskrans	Sasol Mining	2022
Nitro Demolition	Sasol Nitro	Sasol Nitro	2023
Nitro Loading Facility – Civil and Structural	Sasol Nitro	Sasol Nitro	2023
Bosmanskrans Motor Housing Construction	Bosmanskrans	Airblow SA	2023
Bethal Pick n Pay	Bethal	Pick n Pay	2023
The One Property Development - Silkaatzkop	Secunda	Property Plus	2025
Tulela - Tsiri River Rehabilitation	Hoedspruit	Tulela Safari Lodge	2024
Raising of Penstock Platforms FAD 6	Outside Ash	Sasol	2025
K4 Surface Upgrade - Sibande Stillwaters	Rustenburg	Side 8	2025
Moditlo Small Dam rehabilitation	Hoedspruit	Moditlo Estate	2025
Jeffrey Stacker platform	Outside Ash	LAEL	2025
ATT Warehouse construction	Secunda	Heroica Investments	2026
Amphibious Excavator - FAD 6 operations	Outside Ash	Sasol	2026
Lifting and sealing East and West Penstock Platforms	Outside Ash	Sasol	2026
Evander Gold Mine X-ray room construction	Evander	Evander Gold Mines	2026





CONTACT US



-  017 638 0579
-  info@twgroup.co.za
-  www.twgroup.co.za
-  Grootvlei Farm |
Trichardt | 2300
-  [/twgroup.co.za](https://www.facebook.com/twgroup.co.za)
-  [/twgroup2024](https://www.instagram.com/twgroup2024)